



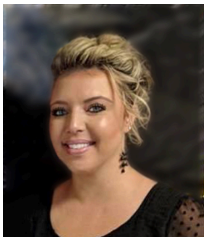
**\$604,000**

## **PRESTON HWY, SHEPHERDSVILLE, KY, USA**

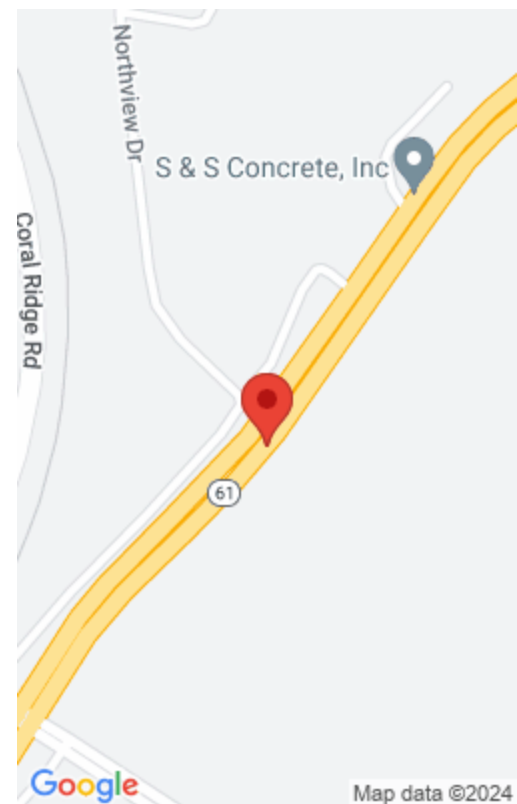
<https://www.kyprimerealty.com>

Excellent development opportunity - 6.04 acres zones IL (Light Industrial) located approx. 1 mile from I-65. This property is also part of a larger development opportunity that includes a total of 84+ acres zoned B-1 (business), A-1 (agricultural) and IL - (Light Industrial) which may all be purchased as well. This property is located approx. [...]

- 0.00 baths
- Lot
- Land-Farm/Land
- Active
- 0.00 acres



**Amy L Newton**





## Location Details

<b>County:</b> Bullitt Bullitt	<b>Area Desc:</b> 051 - Bullitt County
<b>Directions:</b> Directions: (google address 1689 S. Preston Hwy) from Louisville - Gene Snyder fwy head south on I-65 S - 9.3 miles, take exit 116 for KY-480 toward KY-6, keep right at the fork and merge onto KY-480 w/Cedar Grove Rd. 0.9 mi. turn right only KY-61N, destination will be on the left. Or from Lebanon Junction head NE on KY-61 N twrd Collings Hill Rd. 9.4 miles, the destination will be on left	<b>Zoning:</b> Other
<b>Elementary School:</b> Old Mill	<b>Intermediate School:</b> Not Applicable
<b>Middle or Junior School:</b> Mt Washington	<b>High School:</b> Bullitt



## Property Details

<b>Lot Dimensions:</b> 0000000	<b>Finished Area Total:</b> 0.00
<b>Unfinished Area Total:</b> 0.00	<b>Farm w/House:</b> No



## Property Features

**Utilities: Electricity:** Electricity Available    **Utilities: Sewer:** Sewer Available  
**Utilities: Water:** Water Available



## Fees&Taxes

**Tax Rate:** 11.54 per thousand



## Miscellaneous



**Conservation Easement:** No

**Best Use:** Other

**Possession of Farm:** Close Of Escrow

**Present Use:** LI(Light Industrial)

**Potential Use:**

**Possession of Aux:** Close Of Escrow

---

**Courtesy of**

**Office Name:** Lifestyl Real Estate

**Office ID:** 20180519171536745066000000

