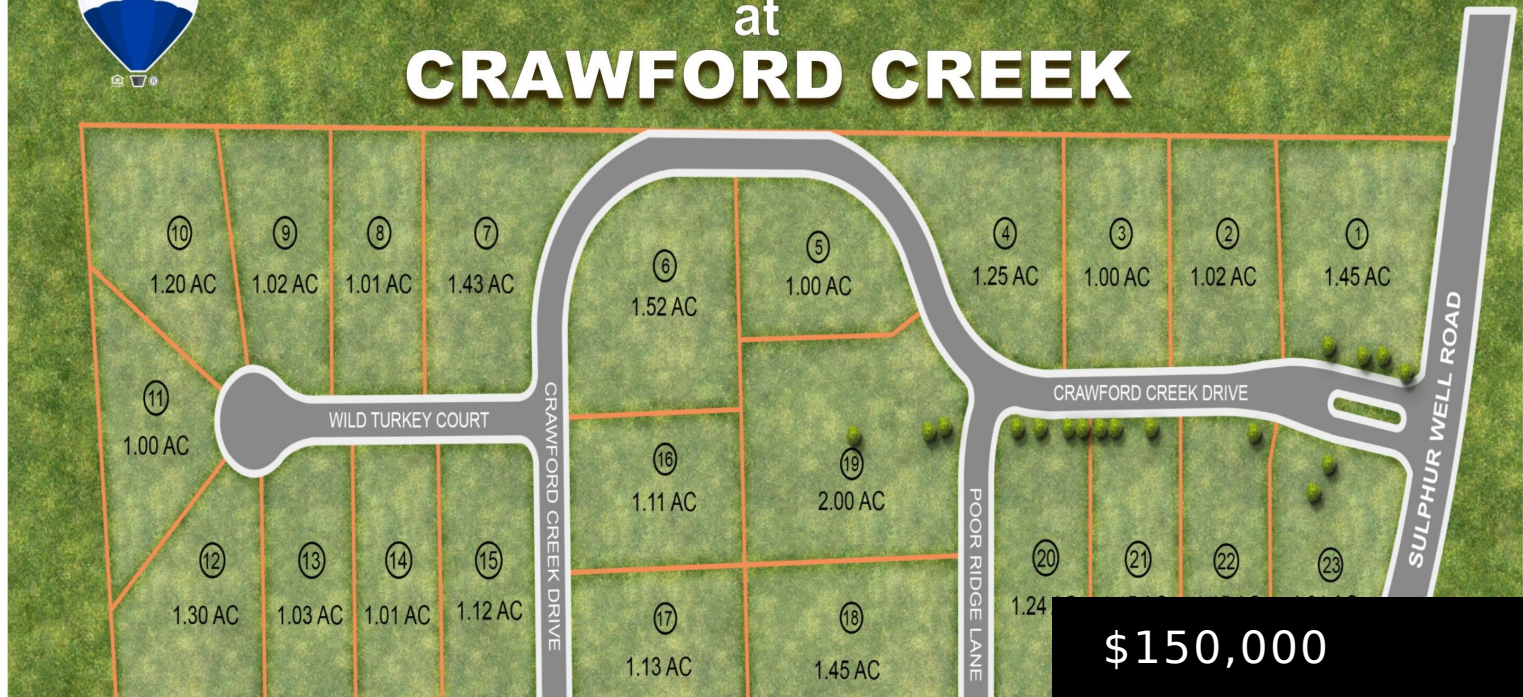




# WATKINS RESERVE at CRAWFORD CREEK



**\$150,000**

## NICHOLASVILLE, KY 40356, USA

<https://www.kyprimerealty.com>

Watkins Reserve at Crawford Creek is the newest 1+ acre development located conveniently just off of US27Bypass. This exceptional development has preserved the original trees to allow great trees lines and shade. Amazing lots with views of farm land and greenspace. Enjoy taking a walk on the sidewalks. Developer to install additional trees. Custom Entrance [...]

- 0.00 baths
- Lot
- Land-Farm/Land
- Pending
- 0.00 acres



**Maggie C Taylor**





## Location Details

<b>County:</b> Jessamine Jessamine	<b>Area Desc:</b> 009 - Jessamine County
<b>Directions:</b> us27 to connector road to sulphur well, development on right	<b>School District:</b> Jessamine County - 9
<b>Elementary School:</b> Warner	<b>Intermediate School:</b> Not Applicable
<b>Middle or Junior School:</b> East Jessamine Middle School	<b>High School:</b> East Jess HS



## Property Details

<b>Lot Dimensions:</b> 125	<b>Finished Area Total:</b> 0.00
<b>Unfinished Area Total:</b> 0.00	<b>Farm w/House:</b> No



## Fees&Taxes

**Tax Rate:** 1.2527



## Miscellaneous

<b>Conservation Easement:</b> No	<b>Present Use:</b> Other
<b>Best Use:</b> Residential	



## Courtesy of

<b>Office Name:</b> RE/MAX Creative Realty	<b>Office ID:</b> 20180519171536444772000000
--	--

