



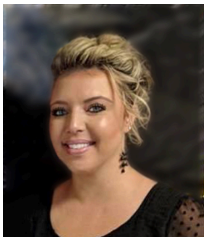
\$600,000

PRESTON HWY, SHEPHERDSVILLE, KY, USA

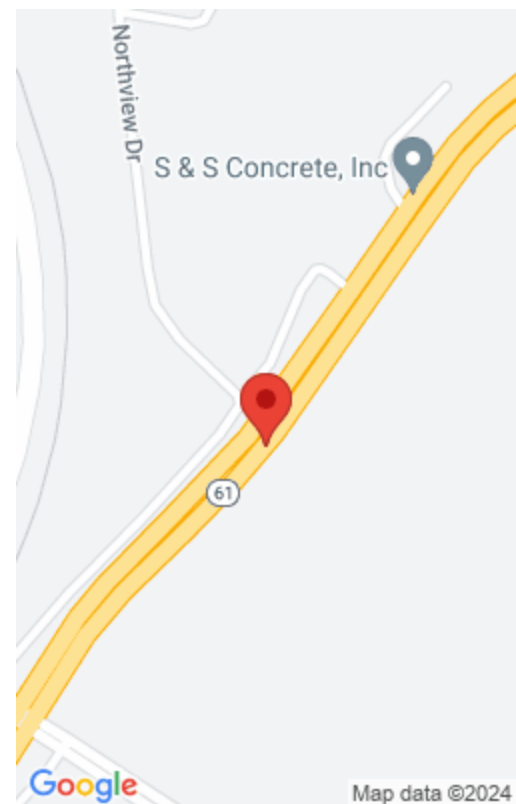
<https://www.kyprimerealty.com>

Excellent development opportunity - 6 acres zones IL (Light Industrial) located approx. 1 mile from I-65. This property is also part of a larger development opportunity that includes a total of 90+ acres zoned B-1 (business), A-1 (agricultural) and IL - (Light Industrial) which may all be purchased as well. This property is located approx. [...]

- 0.00 baths
- Lot
- Land-Farm/Land
- Active
- 0.00 acres



Amy L Newton





Location Details

County: Bullitt Bullitt	Area Desc: 051 - Bullitt County
Directions: Directions: (google address 1689 S. Preston Hwy) from Louisville - Gene Snyder fwy head south on I-65 S - 9.3 miles, take exit 116 for KY-480 toward KY-6, keep right at the fork and merge onto KY-480 w/Cedar Grove Rd. 0.9 mi. turn right only KY-61N, destination will be on the left. Or from Lebanon Junction head NE on KY-61 N twrd Collings Hill Rd. 9.4 miles, the destination will be on left	Topography: Level
Elementary School: Old Mill	Intermediate School: Not Applicable
Middle or Junior School: Mt Washington	High School: Bullitt



Property Details

Lot Dimensions: 0000000	Finished Area Total: 0.00
Unfinished Area Total: 0.00	Farm w/House: No



Property Features

Utilities: Electricity: Electricity Available **Utilities: Sewer:** Sewer Available
Utilities: Water: Water Available



Fees&Taxes

Tax Rate: 11.54 per thousand



Miscellaneous



Conservation Easement: No

Best Use: Industrial

Possession of Farm: Close Of Escrow

Present Use: **Potential Use:** IL(Light Industrial)

Possession of Aux: Close Of Escrow

Courtesy of

Office Name: Lifestyl Real Estate

Office ID: 20180519171536745066000000

