



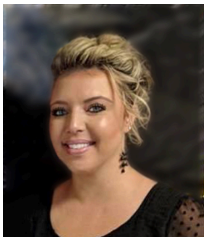
\$3,200,000

PRESTON HWY, SHEPHERDSVILLE, KY, USA

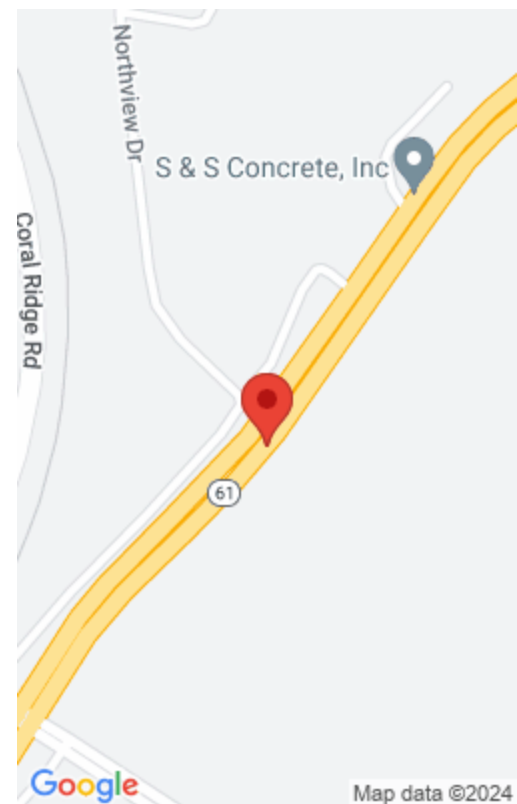
<https://www.kyprimerealty.com>

Excellent development opportunity - 21.98 acres zoned AG-1 (agricultural) and 10 acres zones B-1 (business) for a total of 31.98 acres located approx. 1 mile from I-65. This property is also part of a larger development opportunity that includes a total of 90+ acres zoned B-1 (business), A-1 (agricultural) and IL - (Light Industrial) which [...]

- 0.00 baths
- Lot
- Land-Farm/Land
- Active
- 0.00 acres



Amy L Newton





Location Details

County: Bullitt Bullitt	Area Desc: 051 - Bullitt County
Directions: Directions: (google address 1689 S. Preston Hwy) from Louisville - Gene Snyder fwy head south on I-65 S - 9.3 miles, take exit 116 for KY-480 toward KY-6, keep right at the fork and merge onto KY-480 w/Cedar Grove Rd. 0.9 mi. turn right only KY-61N, destination will be on the left. Or from Lebanon Junction head NE on KY-61 N twrd Collings Hill Rd. 9.4 miles, the destination will be on left	Topography: Level
Zoning: Other	Elementary School: Old Mill
Intermediate School: Not Applicable	Middle or Junior School: Mt Washington
High School: Bullitt	



Property Details

Lot Dimensions: 000000	Finished Area Total: 0.00
Unfinished Area Total: 0.00	Farm w/House: No



Property Features

Farm Improvements: Horse Barn(s)	Utilities: Electricity: Electricity Available
Utilities: Sewer: Sewer Available	Utilities: Water: Water Available



Fees&Taxes

Tax Rate: 11.54 per thousand



Miscellaneous



Conservation Easement: No **Present Use: Potential Use:** B-1 and AG-1
Best Use: Commercial,Industrial,Other **Possession of Aux:** Close Of Escrow
Possession of Farm: Close Of Escrow

Courtesy of

Office Name: Lifestyl Real Estate **Office ID:** 20180519171536745066000000

