

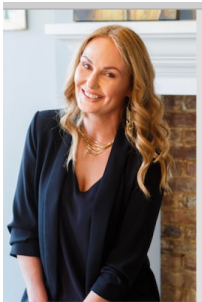


**\$175,000**

**3022 LEXINGTON RD, NICHOLASVILLE, KY  
40356, USA**

<https://www.kyprimerealty.com>

- CommonInterest
- Pending



**A Angel Denton**





## Location Details

**County:** Jessamine

**Area Desc:** 009 - Jessamine County

**Directions:** US 27 South/Nicholasville Rd. from Lexington; proceed past Sam's Club/Kohl's & the Boot Store. Property on Left between Stokley Marine & Power's Transmission.



## Property Details

**Floor Type:** Partially Carpeted,Wood

**Sale/Lease Includes:** Buildings,Land

**# of Buildings:** 1

**Construction Materials:** Brick

**Terms:** Cash,Conventional,Sale

**Possession:** Close of Escrow,Negotiable



## Property Features

**Roof:** Composition,Shingle

**Ceiling:** Drywall

**Parking:** 1 - 5 Spaces

**Sprinklers:** None

**Utilities:** Telephone

**Utilities: Electricity:** Electricity Connected

**Utilities: Natural Gas:** Natural Gas Available

**Utilities: Water:** Water Connected



## Courtesy of

**Office Name:** Rector Hayden, Realtors

