

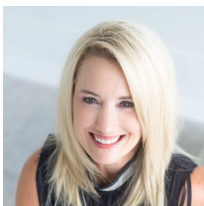


\$1,500,000

1648, BERE A, ROAD, RICHMOND, KY, 40475

<https://www.kyprimerealty.com>

- CommonInterest
- Active



Elizabeth Rice





Location Details

County: Madison

Area Desc: 008 - Madison County

Directions: From I-75 South take Exit 83(Duncannon at Buccees)Going towards Berea on 25 from Richmond, approx. 1 mile from Kroger Intersection. Properties are on the right side of road.



Property Details

Floor Type: Concrete

Sale/Lease Includes: Buildings,Business,Land,Leases

of Buildings: 3

Construction Materials: Aluminum Siding,Block

Terms: Cash,Conventional,Sale

Possession: Close of Escrow,Subject To Tenant Rights



Property Features

Roof: Metal

Parking: 56 or More Spaces,Gravel,On Site,Paved

Sewer: Septic Tank

Sprinklers: None

Utilities: Electricity: Electricity Connected

Utilities: Water: Water Available



Miscellaneous

Income & Expenses: Electric: 3036

Income & Expenses: Real Estate Taxes: 1994



Courtesy of

Office Name: Keller Williams Legacy Group

